

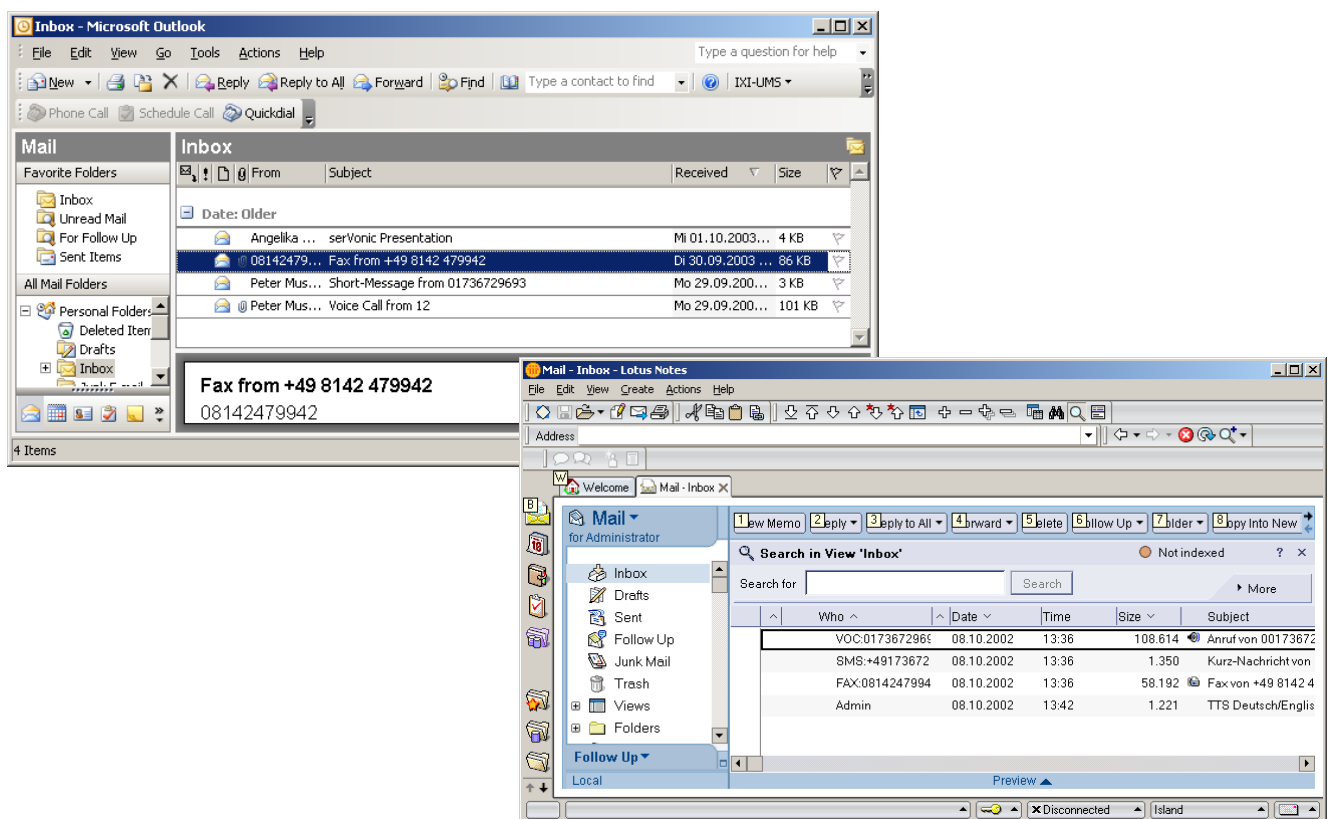
IXI-UMS and the Service Fax

Sending and receiving faxes

IXI-UMS, the high-performance unified messaging server from estos, supports the Service Fax (for Fax Group 3). Therewith, you can send and receive faxes directly from the workstation client/server-based.

The Service Fax of the IXI-UMS Server can be operated stand-alone (pure fax server) or as part of a whole unified messaging system with IXI-UMS, which integrates the Services Fax, Voice, SMS and Mobile (remote inquiry) in a messaging system.

IXI-UMS is integrated in available architectures such as Microsoft Exchange or Lotus Domino via Connectors and can be operated with current PBX's (ISDN, IP-based or analogue).



Installation Preconditions

Server-Operating System	Windows Server 2012, Windows 2008, Windows 7, Windows 2003, Windows XP	
Operation Mode	ISDN or VoIP (H.323, SIP)	
Communication Hardware	ISDN	Conventional PBX Server-suitable hardware with CAPI 2.0 support e.g. active ISDN-board or suitable Router/MediaGateway
	H.323 / SIP/ SoftFax / T.38	IP-basierte PBX's e.g. innovaphone PBX or Cisco CallManager
	Analogue	Conventional PBX Server-suitable hardware with CAPI 2.0 support e.g. active ISDN-board

IXI-UMS and the Service Fax

Essential fax features of IXI-UMS

- Fax sending
- Fax reception
- Fax Group 3
- Inbound routing (direct dialing capable)
- Compression: MH, MR, MMR
- Error correction: ECM
- Delivery optionally in TIFF, PDF
- Priority control / sending at nighttime
- Headline generation
- Fax header and fax cover sheet according to HTML template
- Short fax, single fax, round fax, distribution fax, mail merge fax
- Sending of faxes optionally via rendering at the IXI-UMS Kernel or via fax printer driver at the client
- Separate IXI-UMS client installation is not necessary
- "Invisible" integration in the e-mail clients like e.g. Microsoft Outlook, Microsoft Entourage (Mac) or Lotus Notes
- Client Tools available / fax printer driver, auto fax, mail merge fax integrated in MS Word
- OCR feature (Optical Character Recognition) for automatic fax detection at the Kernel (conversion in text files - > search-features usable in the e-mail system)
- Mobile access possible by a combination with OCR and TTS (Text to Speech)
- Integration of the solution via Connectors, e.g. in Microsoft Exchange (Microsoft Exchange Server 2013, 2010,, 2007, 2003, 2000), IBM Lotus Domino, Novell GroupWise, SAP-systems, SMTP messaging/Sun Solaris)
- Connection as network fax solution for scanners/MFP's like Hewlett Packard HP Digital Sender 9200C / HP MFP's 4345, 9040, 9050, 9500, Lexmark OptraImage
- Sophisticated concept for several sites (inbound routing and outbound routing)
e.g. central DP, decentralized PBX-structure
- Security concept for unproblematic monitoring of the firewall
- High availability, parallel operation, multi-computer concept
via SMTP routing with DNS (MX Records, Round Robin)
- ISDN CAPI 2.0: S₀ and S_{2M}
- Common ISDN-boards suitable for servers can be used, e.g. Dialogic Diva Server
- Common media gateways and routers can be used, e.g. Dialogic Media Gateway DMG4000, Funkwerk bintec
- Protocols: public (e.g. DSS1), PBX-networking (e.g. Q-SIG), Supplementary Services (e.g. MWI Message Waiting Indication, Call Transfer)
- Sharing of hardware resources with other services, e.g. RAS, Online
- Fax over IP
Signaling: H.323, SIP; Fax: T.38, SoftFax
- Operation at conventional (ISDN)-PBX's like e.g. from Siemens, Alcatel, Panasonic, as well as at IP-based PBX's like e.g. from Cisco or innovaphone
- Suitable for the operation with virtual machines, e.g. VMware
- SBC (Server-based computing) compatible, suitable for Thin Clients:
CITRIX XenApp / Presentation Server / MetaFrame, Windows Terminal Server
- Partner-realizations for ERP and CRM systems such as Siebel, kki, Baan

Contact

estos GmbH
Ilzweg 7
82140 Olching
Germany
Phone: +49 8142 4799-0
Fax: +49 8142 4799-3434
E-mail: info@estos.de
www.estos.com